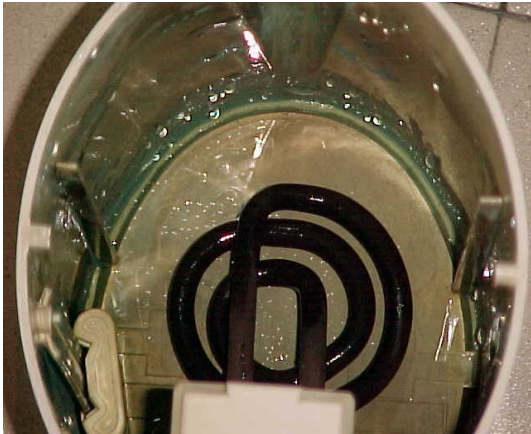
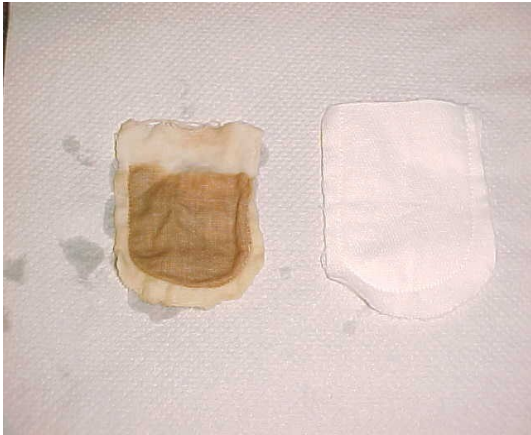


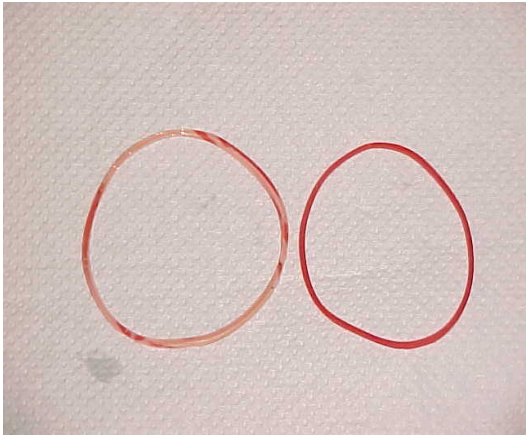
What is in our tap water?



Kettle due to Chlorine, Volatile Organic Chemicals and Sediments from our water tap



Sediments collected in just 2 days from Kitchen Tap



De-colourisation of rubber band due to Chlorine

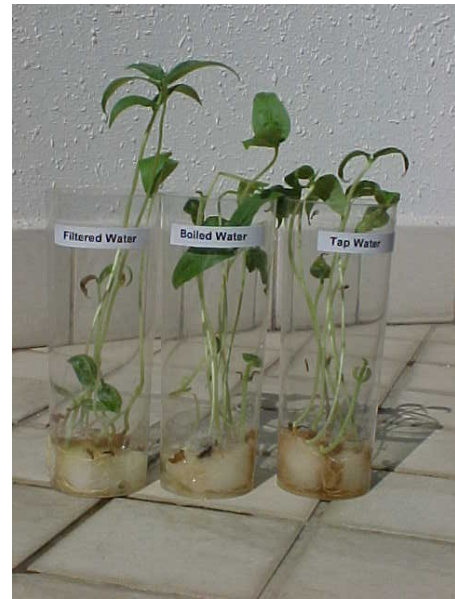


Corroded Shower Head Holder from Chlorine vapour



Bottom part of Shower Head (Free of corrosion)

After 10 days



Using AQ-4000 filtered Water
Greener & Healthy Leaves



Using Tap Unfiltered Water

Height Difference
Filtered & Boiled
25mm

Height Difference
Filtered & Tap
45mm

After 25 days



Filtered Water



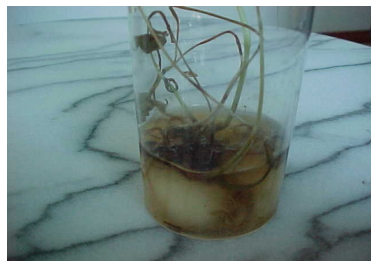
From Tap: Dieing



Boiled Water: Weak



Healthy roots



Tap dieing roots



Boiled rotton roots